

# E.A. DelleDonne Corporate Center

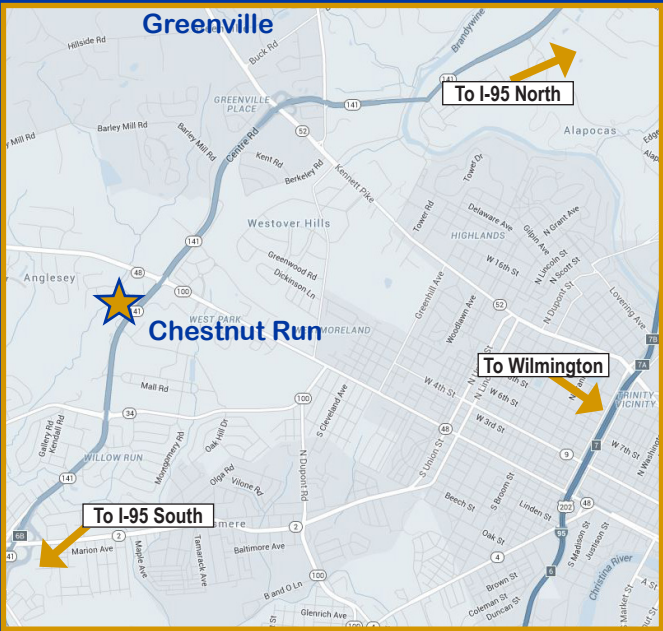
## Site plan



## Superior Location

- Located at the corner of Rts. 141 & 48
- Minutes from the town of Greenville
- Easy access to Rts. 100, 202 and I-95
- 24-hour access through a card access system
- Located within minutes of shopping and dining
- Ideal location in New Castle County
- Served by DART bus route 20

## Locator map



# E.A. DelleDonne Corporate Center

1011 & 1013 Centre Road  
Wilmington, DE 19805



FOR LEASE | Suites from 700 s.f. to 3,000 s.f.  
BUILD TO SUIT | 50,000 s.f. expansion

## Campus Description

- First class office in campus style setting
- Located immediately outside the Wilmington city limits
- Minutes from the town of Greenville
- Two, 4-Story, Class A office buildings totaling 194,000 s.f.
- 24-hour access through a card access system
- Magnificent window line
- Abundant free surface parking with executive parking available underneath the building
- Built in 1986
- Plug and play finished space available
- Recent capital improvements include new roof, new elevators, new restrooms



For more information, please contact:

Jamie V. Vari  
+ 1 302 356 2862  
Jamie.Vari@am.jll.com

Cindy Fleming  
+ 1 302 356 2866  
Cindy.Fleming@am.jll.com

JLL | Jones Lang LaSalle  
222 Delaware Avenue, Suite 1610  
Wilmington, DE 19801  
+ 1 302 356 2858 | [www.us.jll.com/philadelphia](http://www.us.jll.com/philadelphia)

Although information has been obtained from sources deemed reliable, Owner, Jones Lang LaSalle, and/or their representatives, brokers or agents make no guarantees as to the accuracy of the information contained herein, and offer the Property without express or implied warranties of any kind. The Property may be withdrawn without notice. If the recipient of this information has signed a confidentiality agreement regarding this matter, this information is subject to the terms of that agreement. ©2016. Jones Lang LaSalle. All rights reserved.

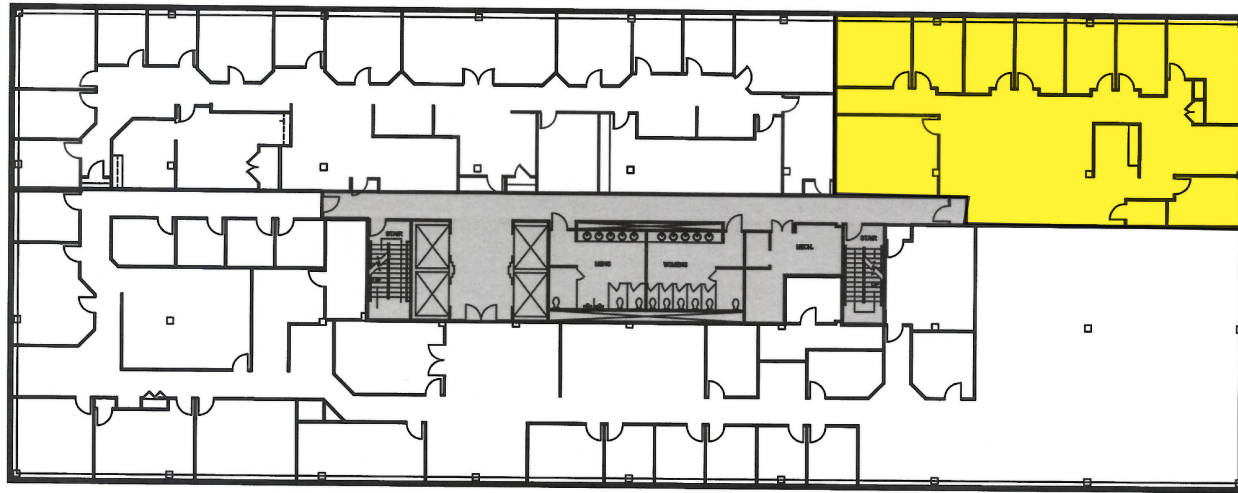




## 1013 Centre Road Building

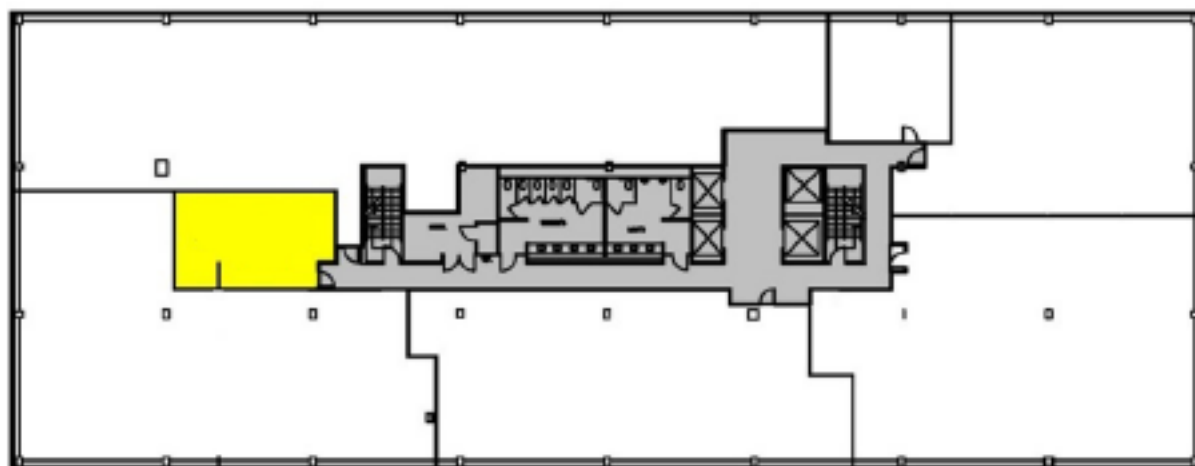
### Second Floor:

Suite 203 - 3,635 RSF



### Fourth Floor:

Suite 401 - 765 RSF



## 1011 Centre Road Building



## E.A. DelleDonne Corporate Center

1011 Centre Road - 50,000 SF EXPANSION

- Build-to-suit
- Structured parking
- 50,000 s.f. available
- Available 18 months from lease execution